

Vitra

ArchiPlan
Collection



VitrA

We progressively invest in essentially
human spaces - the bathrooms.



The complete bathroom

Exploring physical and emotional needs, Vitra invests in design to produce every essential element in the bathroom.



It's all about inspiration

It all begins with questions posed by the design discipline to understand needs, desires and choices. Designed by Vitra, an extraordinary wealth of attractive combinations help satisfy these needs and desires.



High powered perfection

Seven cutting-edge factories and plants in Turkey and Russia, create sophisticated designs and maintain extremely high standards, whilst progressively reducing Vitra's ecological footprint.



Collaboration with designers

Vitra works with acclaimed industrial designers from around the world. Not only does the collaboration with these top talents improve product functionality, but it also introduces an entirely original range.



Vitra across the world

Bathroom designs greet customers around the world through 2000 sales points in over 75 countries, including 150 exclusive Vitra showrooms in Istanbul, London, Cologne, Moscow, Dubai, Mumbai, Delhi, and other major cities.



Technology lights up the future

The Vitra Innovation Centre serves as the headquarters of the brand's R&D activities with a strong engineering team, leading the bathroom industry with new solutions and technologies.



Improved personal hygiene

Vitra's continuous research into human health introduces new technologies for improved hygiene in the bathroom. These solutions raise the personal hygiene experience to a new level.



A pledge to the future

Vitra embraces Blue Life, a set of guidelines devised to mitigate our impact on the environment, and is held as a production, design and management philosophy.

ArchiPlan



Smart solutions for lay outs



Every project is unique with different needs. To meet these needs, ArchiPlan Collection was carefully designed by Design Studio VitrA. An ideal solution for homes, hotels, restaurants, cafes and bars, especially those with smaller bathrooms. This collection of bathroom furniture, sanitaryware and accessories offers smart, durable solutions to enable seamless planning.

Scan the QR to visit the website.









Minimal water contact



Designed with a water and moisture resistant plywood furniture finish, this collection is hardwearing without compromising on aesthetics or functionality.

The minimal gap between the washbasin and the bathroom furniture provides protection, preventing water damage to the furniture.





Unique options



Featuring stylish open and closed storage options, ArchiPlan stands out with a wide range of designs, modules and colour options. With black, taupe and white choices, it helps create either a cosy or cool atmosphere.







A new dimension in design



Along with various width options, the ArchiPlan Collection offers a new dimension in bathroom design with outstanding flexibility including various depth options.

Planning is made easy for smaller spaces with width options starting from 45 cm wide with a 38 cm depth, along with 60 cm and 80 cm widths with a 28 cm depth.



VIVA

VIVA

VIVA

VIVA

VIVA

VIVA

VIVA

VIVA

Every space matters



Reflecting the design philosophy of the ArchiPlan Collection, maximised storage spaces turn bathrooms into living spaces. The collection offers ultimate convenience with storage solutions in the cabinets and drawers along with metal shelves.



Increased storage space



By not limiting the available space within the cabinets, the metal shelves add extra storage solutions that are flexible and customisable. Using these next to the washbasin or especially above the WC opens up the space, even in smaller areas.

Born from an elegant blend of black metal and ceramic, this accessory unit with a ceramic shelf offers extra space for everyday items.



Spacious bathrooms through compact design



Specifically designed to save space in smaller bathrooms, the compact style of the ArchiPlan Collection fills inefficient spaces perfectly by integrating the washbasin and WC in the same unit. This enables both the WC and the washbasin to fit in an area of just 150 cm. It offers a clean look thanks to its compact design that hides the cistern inside the furniture.







A wide choice of washbasin



The vanity basins stand out as being visually distinctive, offering an efficient space solution. The washbasin units with a double-mixer in one basin offer ideal solutions for communal areas or for larger families, again saving space.

Built with precision and simplicity, the washbasins with a metal pedestal meet the needs of various spaces without compromising on style.

With four different sizes (45 cm, 60 cm, 90 cm and 120 cm) and options with or without drawers, they offer a wide range of stylish choices for both small and large spaces.



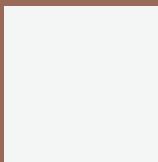


Smart solutions for layouts



Colours

Bathroom furniture



Matt white

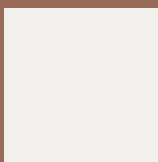


Matt taupe



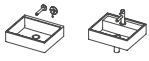
Matt black

Ceramic



White

Washbasin



Washbasin
45x38 cm



Semi-recessed
washbasin
55x46 cm



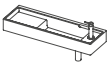
Washbasin
60x38 cm



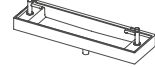
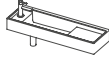
Compact washbasin
60x28 cm



Washbasin
90x38 cm

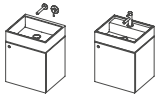


Compact washbasin
90x28 cm



Double washbasin
120x38 cm

Washbasin units



Washbasin unit
45x38 cm



Washbasin unit
60x38 cm



Compact washbasin unit
60x28 cm

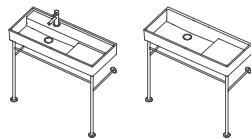


Washbasin unit
90x38 cm



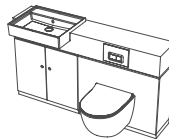
Compact washbasin unit
90x28 cm

Washbasin with metal leg



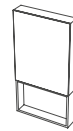
Metal leg
90x38 cm

WC unit



WC unit
150 cm

Side unit



Mid unit
55 cm

Mirrors and accessories



Shelf
45 cm



Shelf
60 cm



Double Shelf
45 cm



Double Shelf
60 cm



Mirror with
shelf
45 cm



Mirror with
shelf
60 cm



Towel holder
With ceramic vanity
ø30 cm



Roll holder
with ceramic vanity
ø30 cm

VitrA Turkey

Büyükdere Cad. Ali Kaya Sok. No: 5
Levent 34394 İstanbul, Turkey
Phone: +(90 212) 350 80 00
Fax: +(90 212) 350 84 45
www.vitra.com.tr

VitrA UK

Park 34 Collet Way,
Didcot Oxon OX11 7WB, UK
Phone: +(44 1235) 750 990
Fax: +(44 1235) 750 985
www.vitra.co.uk

VitrA Germany

Agrippinawerft 24,
50678 Cologne, Germany
Phone: +49 (0) 221 / 27 73 68-0
Fax: +49 (0) 221 / 27 73 68-500
www.vitra-bad.de

VitrA France

Z.I. Le Poirier - CS 80019
F - 28132 Nogent Le Roi CEDEX, France
Phone: +33 (0) 2 37 38 69 92
Fax: +33 (0)2 37 51 43 94
france.vitrabathrooms.com

VitrA Italy

Viale San Pietro 83
41049 Sassuolo (MO), Italy
Phone: +39 0536 1818100
italy.vitrabathrooms.com

VitrA UAE

2020 Building – Al Quoz 3 Plot 27
Showroom No: 7 Sheikh Zayed Road –
Dubai/UAE
Phone: +971 (4) 547 8045
www.vitraglobal.com

VitrA India

F-001, F-002, F-003, 1st Floor 106,
Vikas Centre, S V Road,
Santacruz (West), Mumbai - 400054
Phone: +(91) 22-6708 5000
www.vitra-india.com

VitrA Russia

9, Varshavskoe Highway, Bldg.1
Danilovskaya Manufactory
Block 'Sitsevy', 4 Entr., 1st Floor
Moscow 117105 Russia
Phone: +7 (495) 221 76 11 (ext. 1101)
www.vitra-russia.ru

VitrA International

Büyükdere Cad. Ali Kaya Sok. No: 5
Levent 34394 İstanbul, Turkey
Phone: +(90 212) 350 80 00
Fax: +(90 212) 350 84 45
www.vitraglobal.com
export@vitra.com.tr

VitrA