

The background features a mix of light and dark gray tones. A large, light gray shape with a black dot pattern is in the upper right. A dark gray shape with a white dot pattern is in the upper left. A light gray curved line is on the left. A dark gray curved line is at the bottom left. A series of parallel dark gray lines is on the right. The central text is contained within a dark gray square with a white border.

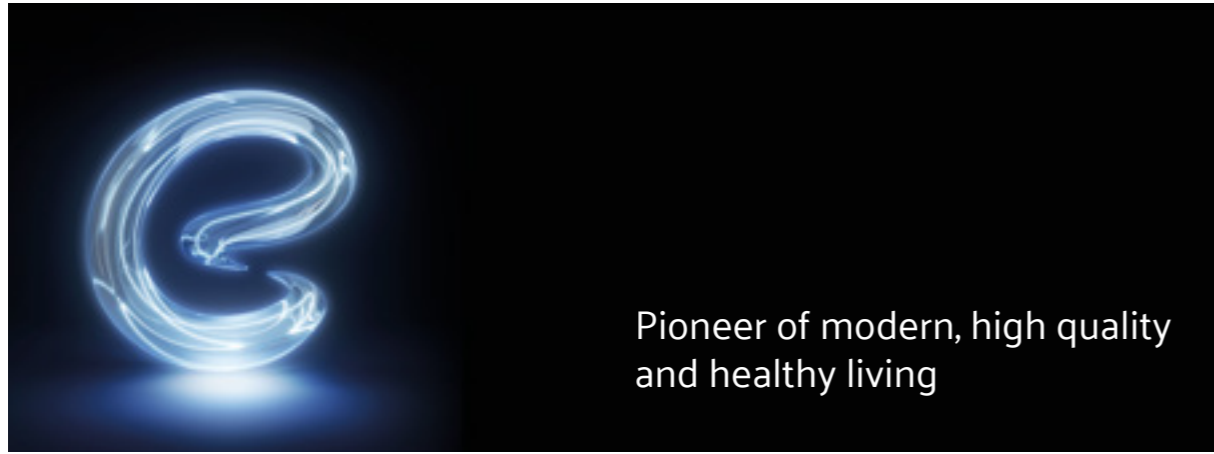
VittrA

---

WORLDWIDE  
REFERENCES

---

VitrA



### The Eczacıbaşı Group

Founded in 1942, Eczacıbaşı is a leading Turkish industrial group with 39 companies, over 11,600 employees and a combined net turnover in 2018 of TL 8.8 billion.

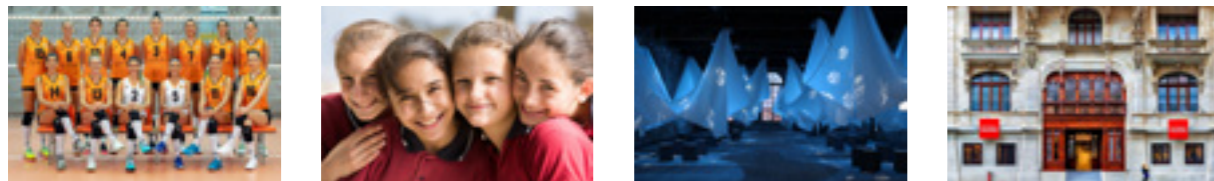
### Core Sectors

Eczacıbaşı's core sectors are building products, consumer products and healthcare. The Group is also active in information technology, natural resources and property development.



### Social Responsibility

The Eczacıbaşı Group has founded and continuously supported numerous initiatives to advance culture and the arts, scientific and public policy research, high quality education, and women in sports.



Eczacıbaşı Vitra Volleyball Team

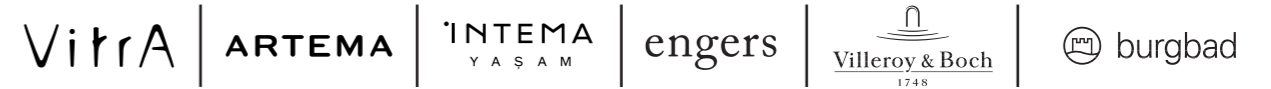
Pupils of a boarding primary school

Istanbul Foundation of Culture and Arts

Istanbul Museum of Modern Art

### Building Products

Propelled by a vision of smart and sustainable living for people of every age, ability and cultural background, the Eczacıbaşı Building Products Division is supported by its multi-brand, multiple manufacturing site and multi-market growth strategy.



### Production Power

In addition to five production facilities in Turkey, the Building Products Division has seven manufacturing sites located in major international markets including France, Germany and Russia. The Division is the majority shareholder of V&B Fliesen GmbH, the former tile division of Villeroy & Boch AG and Burgbad AG, the leader of the European luxury bathroom furniture market.



### Sustainable Approach

The Eczacıbaşı Group embraces a holistic approach to sustainability that aims to achieve a balance between the needs of the business world and society – both in the present and future – and the sustainability of natural resources. Eczacıbaşı group has developed a road map that takes into account not only the UN Sustainable Development Goals and global risk, but also the challenges unique to Turkey.



Vittra

The bathroom is the most versatile space capable of meeting a number of human needs - physical or emotional. This is why we have dedicated ourselves to, and invest in, bathrooms.



### The complete bathroom

Exploring physical and emotional needs, Vitra invests in design to produce every essential element in the bathroom.



### High powered perfection

Seven cutting-edge factories and plants in Turkey and Russia create sophisticated designs and maintain extremely high standards whilst progressively reducing Vitra's ecological footprint.



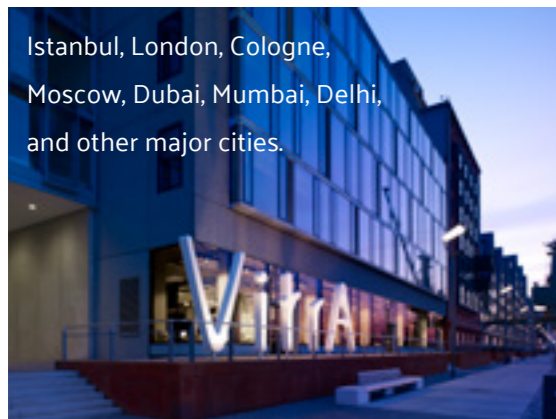
### It's all about inspiration

It all begins with questions posed by the design discipline to understand needs, desires and choices. Designed by Vitra, an extraordinary wealth of attractive combinations help satisfy these needs and desires.



### Collaboration with designers

Vitra works with acclaimed industrial designers from around the world. Not only does the collaboration with these top talents improve product functionality, but it also introduces an entirely original range.



Istanbul, London, Cologne, Moscow, Dubai, Mumbai, Delhi, and other major cities.

### Vitra across the world

Bathroom designs greet customers around the world through 2000 sales points in over 75 countries, including 150 exclusive Vitra showrooms.



### Improved personal hygiene

Vitra's continuous research into human health introduces new technologies for improved hygiene in the bathroom. These solutions raise the personal hygiene experience to a new level.



### Technology lights up the future

The Vitra Innovation Centre serves as the headquarters of the brand's R&D activities with a strong engineering team, leading the bathroom industry with new solutions and technologies.



### A pledge to the future

Vitra embraces Blue Life, a set of guidelines devised to mitigate our impact on the environment, and is held as a production, design and management philosophy.

# Worldwide References

## INDEX

---

Hospitality	11
Residential	55
Culture and Education	71
Sports	83
Airport	93
Commercial	101
Hospital	111

VitrA

## Hospitality

---

Radisson Blu Hotel	13
Hyatt Place Taghazout Bay	15
Kigali Convention Centre and Hotel	17
Argos Hotel Cappadocia	19
Bebek Hotel	21
Museum Hotel Antakya	23
Amano Home Hotel	25
Hotel-Restaurant Schwanen	27
Capri by Fraser	29
Flores Spa Hotel	31
Park Inn by Radisson	33
Kalev Spa Hotel & Waterpark	35
Rixos Premium Saadiyat Island	37
Maxx Royal Belek Golf Resort	39
Voyage Belek Golf & Spa	41
Designhotel Laurichhof	43
Sofitel Mauritius L'Imperial Resort and Spa	45
W Hotel XI'AN	47
Queen Mary II	49
Renaissance Mumbai Convention Centre Hotel	51
JW Marriott Mumbai Sahar	53



## Radisson Blu Hotel

Located on the arterial Boulevard de la République, and close to the Palais de Congrès and the National Museum, the 5-star Radisson Blu is a hotel and conference centre in one. With a rooftop lounge and bar overlooking the majestic River Niger from the tallest building in the city, interiors featuring West African-inspired designs in a palette of neutral colours, an exclusive spa and a secluded swimming pool, this is an elegant destination for even the most discerning contemporary traveller.

### Location

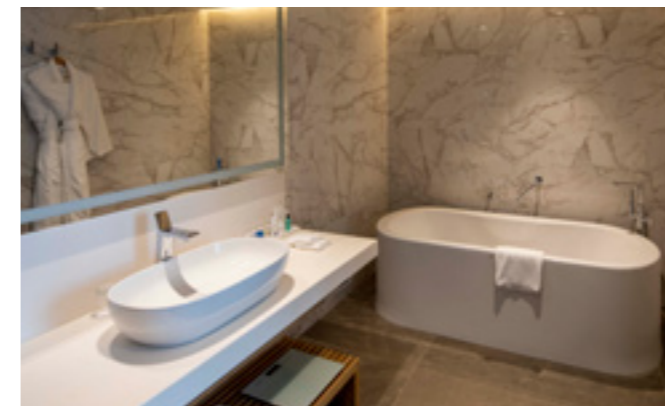
Niger | Niamey

### Architect | Interior Designer

Avcı Architects

### Contractor

Summa International Construction



Nest WC Pan, Metropole Washbasin,  
Samba Shower Set, Nest Trendy Accessories





## Hyatt Place Taghazout Bay

The second Hyatt hotel in Taghazout, the Hyatt Regency Taghazout's 205 rooms are located on a 45-acre site facing the beach. Sited in an expansive prime location development that includes residential units, an 18-hole golf course, a beach club, a retail centre, a tennis academy, a Moroccan spa, and a surf camp, the hotel also has a variety of dining options serving local and international delicacies.

### Location

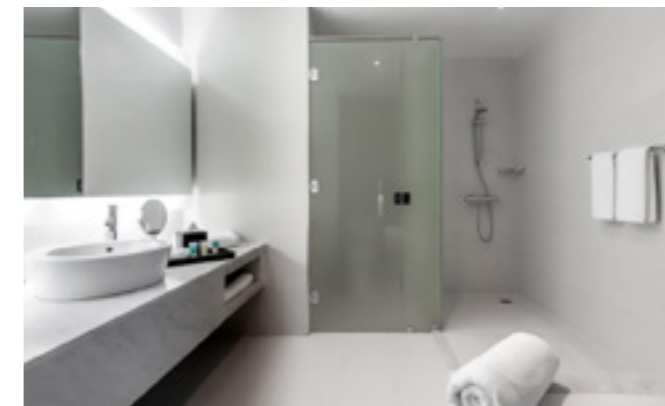
Morocco | Agadir

### Architect | Interior Designer

Omar Alaoui + Imaad Rahmouni

### Contractor

Madaef Groupe



Nest WC Pan, Metropole Washbasin  
Pro Colour Tiles



# Kigali Convention Centre and Hotel

The first and largest of its kind in the region, the landmark Kigali Convention Centre is designed to integrate state-of-the-art technology and the traditional culture of Africa. Situated in the heart of the city with easy access to Kigali International Airport as well as corporate, government and diplomatic mission offices, this number one event venue in Rwanda capable of hosting over 5,000 delegates at a time also benefits from business and leisure facilities including sophisticated restaurants.

## Location

Rwanda | Kigali

## Architect | Interior Designer

Yazgan Design Architecture

## Developer

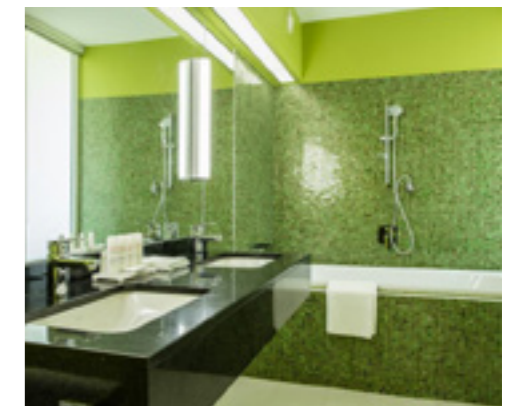
Ultimate Concept

## Contractor

Summa International Construction



Sento WC Pan, Loop R Control Panel,  
AquaSee Basin Mixer, Optimum Shower Tray



## Argos Hotel Cappadocia

A former monastery in the hilltop village of Uçhisar, the captivating Argos in Cappadocia commands panoramic views of this unique area in the heart of Anatolia. Part archaeological treasure, part charming rural retreat, the rooms in this 5-star hotel are either cut into the natural rock face or contemporary builds with valley-view balconies – but all are decorated with local ethnic rugs, and all have en suite bathrooms designed to spoil the guest: spacious areas with separate bath tubs and walk-in deluge showers.

### Location

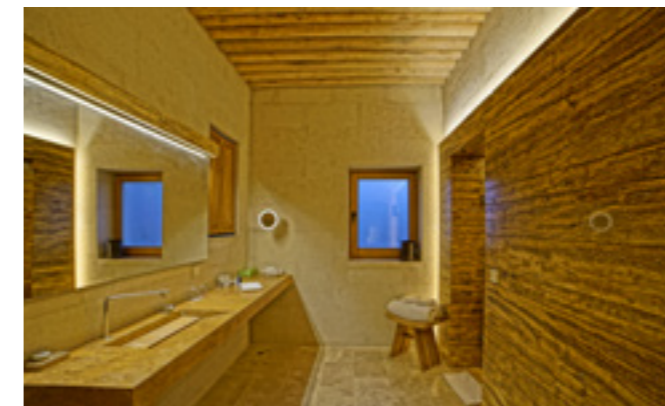
Turkey | Nevşehir

### Architect | Interior Designer

Atelier Argos

### Contractor

Argos Yapı



Pure, Dynamic S, T4, Minimax S Mixers  
Form 500, S50, S20 Wall-Hung WC Pans  
Efes, Arkitekt Washbasins



## Bebek Hotel

Recently refurbished under the deft touches of the internationally acclaimed architect Mahmut Anlar and GEO\_ID the iconic Bebek Hotel has always symbolised luxury in the fairy tale waterway that is the Bosphorus. The legendary waterfront bar is now rivalled by the rooftop bar; Bosphorus-view suites and rooms and a world-class Chinese restaurant make this the place to stay far from the bustle of city centre in a buzzing, upmarket residential area.

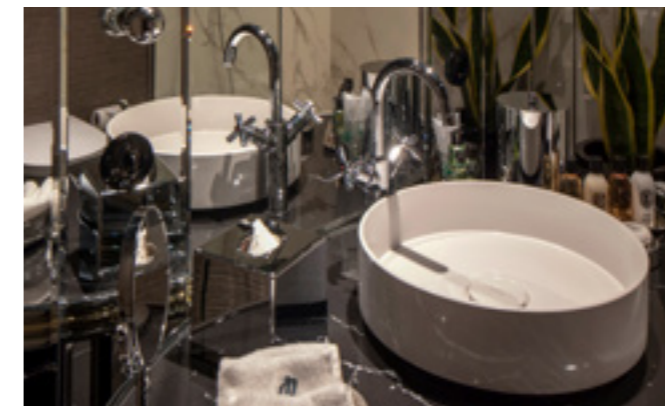
### Location

Turkey | İstanbul

### Architect | Interior Designer

Mahmut Anlar

GEO\_ID



Metropole Washbasin, Nest Rim-ex Wall-Hung WC Pan,  
Juno, Suit, Lite LC, Flo S Mixers,  
Sirius, Loop R Control Panel



## Museum Hotel Antakya

Ingeniously suspended over a 2300-year-old archaeological site that includes the world's largest mosaic floor, this hotel offers an unparalleled glance into the story of humankind. Every one of the sumptuously appointed guest rooms is equipped with a luxury en suite bathroom. Some rooms face the ancient Antioch's Roman baths, the museum and the excavations below, whilst others command vistas of the city, the mountain and St Pierre. A fantastic spa, a ballroom and five world-class dining venues complete the Museum Hotel Antakya, which has breathed new life into the city.

### Location

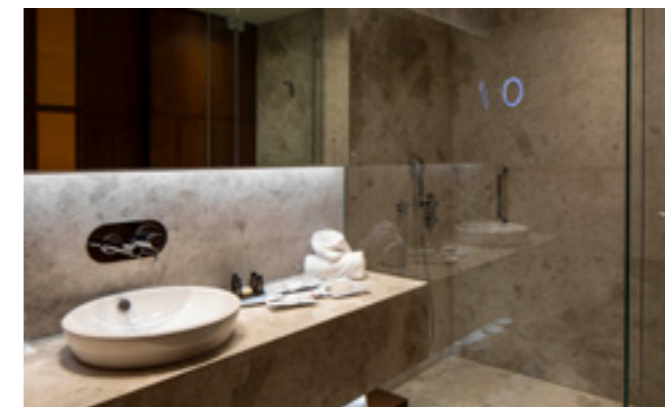
Turkey | Hatay

### Architect | Interior Designer

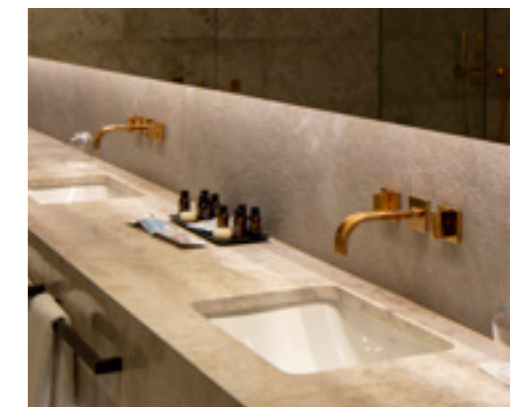
Emre Arolat Architecture

### Contractor

ASF Otelcilik



AquaMed, Pure, Juno, Q-Line, Origin, AquaHeat Mixers, Metropole, S50 Washbasins, Sento, S20, S50, Nest Wall-Hung WC Pans



## Amano Home Hotel

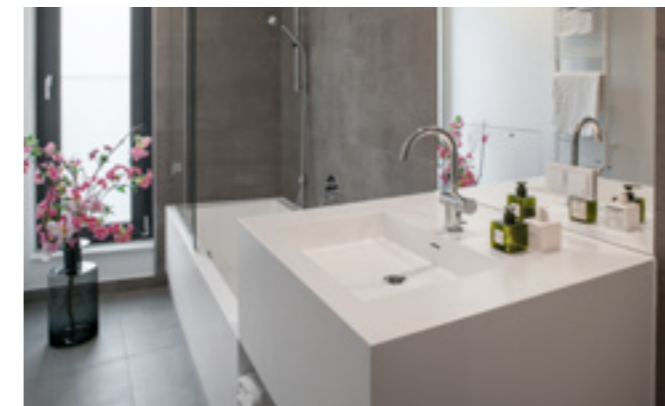
A 'home from home' for the extended-stay business visitor or tourist, the Amano Home Hotel is located near the Rosa Luxembourg-Platz U-Bahn station in the heart of Berlin's romantic neighbourhood with cafés, bars and restaurants as well as museums and other attractions. Far from being a standard, spartan accommodation, the Amano has everything needed for a comfortable stay in 34 beautifully appointed city view apartments: separate sitting and sleeping areas, spacious, modern bathrooms and kitchenettes. Additional services include laundry, bicycle hire and housekeeping.

### Location

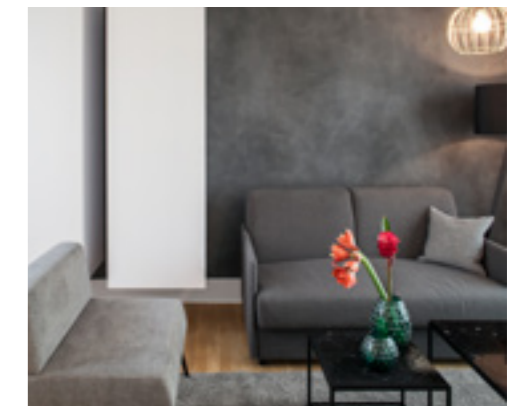
Germany | Berlin

### Architect | Interior Designer

Jan Wiese Architekten Berlin



Ice & Smoke Grey Tiles



## Hotel-Restaurant Schwanen

Situated in the middle of Germany's largest outlet city, the 'Swan' is as beautifully designed outside as it is inside: finished in select accessories and fine materials, a total of 72 units – from studios through to rooms and suites – all offer 4-star comfort. This exceptional family-run hotel combines conference centre with home comforts as well as Swabian specialties in the restaurant serving the best local produce.

### Location

Germany | Metzingen

### Architect | Interior Designer

Plan2Plus Design Munich



Pro Colour Tiles



## Capri by Fraser

A stylish 4-star hotel residence located on Museum Island, a short walk from Berlin's famous museums, Capri by Fraser Berlin's 143 smart serviced apartments range from studios to one-bedroom units ideal for leisure and business travellers looking for short stay apartments, as well as for extended-stay guests and group bookings. Each unit is individually finished with carefully curated works of art, well-equipped kitchenette and bathrooms with either a bath tub or a rain shower; floor-to-ceiling windows overlook the city. Conference facilities cater for the business guest, and the fully equipped gym is open 24/7. An additional attraction is the archaeological site below the lobby, now protected under a glazed floor.

### Location

Germany | Berlin

### Architect | Interior Designer

IOI Design Hamburg



Pro Nature Tiles





## Flores Spa Hotel

A stunning oriental atmosphere, a winter garden and a matchless spa in one, the 4-star hotel transports the guest to Bali with exotic hand-made furnishings. A total of 42 units offer single, double, deluxe rooms and suites, decorated with banana leaf- or grass mats and inviting rugs, tactile wooden mosaics adorning the beds, and marble or solid wood washbasins in marble bathrooms. Panoramic views of Druskininkai old town or the bend in the River Nemunas fill the room windows. A glazed gallery connects the new Flores building to Druskininkai Aquapark, whilst another links it to the Druskininkai Health Resort.

### Location

Lithuania | Druskininkai

### Architect | Interior Designer

Raimundas Pilkauskas



Sento WC Pan





## Park Inn by Radisson

A stunning oriental atmosphere, a winter garden and a matchless spa in one, the 4-star hotel transports the guest to Bali with exotic hand-made furnishings. A total of 42 units offer single, double, deluxe rooms and suites, decorated with banana leaf- or grass mats and inviting rugs, tactile wooden mosaics adorning the beds, and marble or solid wood washbasins in marble bathrooms. Panoramic views of Druskininkai old town or the bend in the River Nemunas fill the room windows. A glazed gallery connects the new Flores building to Druskininkai Aquapark, whilst another links it to the Druskininkai Health Resort.

### Location

Latvia | Riga

### Architect | Interior Designer

NRJA

### Contractor

A/S LNK Industries



S50 Wall-Hung WC Pan, S20 Washbasin



## Kalev Spa Hotel & Waterpark

A combination of tradition and 21st-century innovation, the Kalev Spa Hotel is located in the UNESCO World Heritage-listed Old Town bordered by medieval streets and the lush greenery of Kanuti Park. Refurbished in 2019, its 119 rooms include 22 new superior rooms as well as several suites, all with beautifully appointed bathrooms. A range of extra features include an elegant new restaurant and a spacious seminar room. The main attractions, however, are the sprawling indoor waterpark, with an eight-lane, 50-metre pool, several other pools, steam rooms, and water slides, and the extensive spa.

### Location

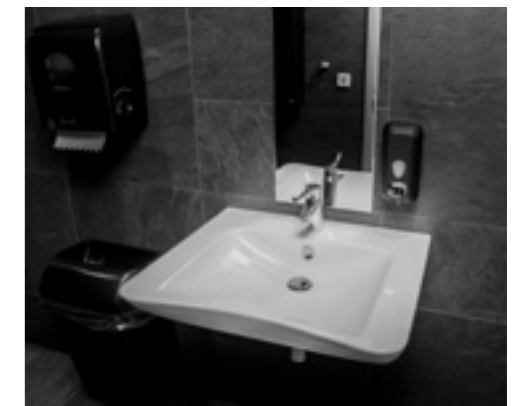
Estonia | Tallinn

### Architect | Interior Designer

Emil Urbel



Nest, Sento Wall-Hung WC Pan,  
S20 Washbasin, Solid S Mixer



# Rixos Premium Saadiyat Island

An exclusive resort within a stone's throw of the Arabian Gulf, and featuring a lagoon pool with a swim-up bar as well as several swim-up rooms, the Rixos is nestled in lush Mediterranean-type gardens. An aquapark, 525 luxurious rooms with splendid interiors and opulently appointed bathrooms, sporting facilities, spa, meeting and wedding packages and a choice of gourmet dining make the Rixos an unforgettable destination.

## Location

UAE | Abu Dhabi

## Architect | Interior Designer

Arketipo Design,  
Wimberly Allison Tong & Goo

## Developer

Rixos

## Contractor

Rixos



Sento Wall-Hung WC Pan, X-Line Mixer

Pro Colour, Pietra Pienza, Terra Nova and Metro Tiles



# Maxx Royal Belek Golf Resort

Experience a flawless stay at Hotel Maxx Royal Belek Golf Resort that justly offers contemporary luxury and class apt to visitors' taste. This luxurious 5-star resort has an outdoor pool, tennis court, private beach, water sports facilities, fitness centre and Spa & Wellness centre.

## Location

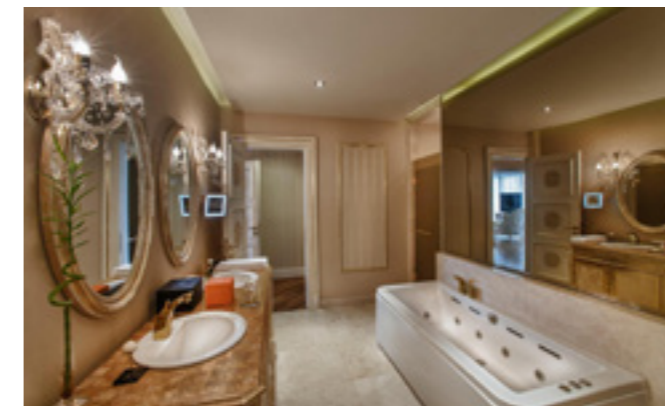
Turkey | Antalya

## Architect | Interior Designer

GEO\_ID

## Contractor

Ersoy Turizm



Nuo, Frame, Outline, S20, Metropole,  
İstanbul Sanitary ware Memoria, Matrix, Suit U Mixers



## Voyage Belek Golf & Spa

No detail is too fine for a Voyage holiday: a wealth of facilities, entertainment options and activities await at this nature-friendly beachfront hotel half an hour's drive from Antalya Airport. Guests can relax in contemporary rooms and suites with sea- or garden view balconies, sitting areas, flat-screen TVs and more in the all-inclusive Hotel Voyage Belek Golf & Spa in between playing tennis or golf, snorkelling, cycling, swimming, treating their taste buds in any one of the ten restaurants, from an open buffet through to Chinese or Italian, or lounging in one of the 14 bars.

### Location

Turkey | Antalya

### Architect | Interior Designer

Baraka

GEO\_ID

### Contractor

Ersoy Turizm



Matrix, İstanbul, Origin Basin Mixers,

Outline, S20 Washbasin,

Zentrum, Conforma, Nest Rim-ex Wall-Hung WC Pans

Pro Colour, Pro Matrix, Colorline, Pro Function, Ararat,

Woodmix, Newcon, Homemade X Tiles

## Designhotel Laurichhof

Located at the gateway to Saxon Switzerland, 30 minutes from Dresden and 90 minutes from Prague, the Designhotel Laurichhof is a cross between showroom and 4-star luxury: each one of the 27 'dream' suites furnished in a different style, ranging from classic through to the modern, invites guests to take away interior concepts and purchase pieces of furniture they like. Perfect for overnight stays as well as family holidays, the family-run hotel offers home comforts (every suite has a kitchen, for instance) alongside top level wellness facilities and gourmet dining. Eco-friendly architecture extends to e-bike and electric car charging points

### Location

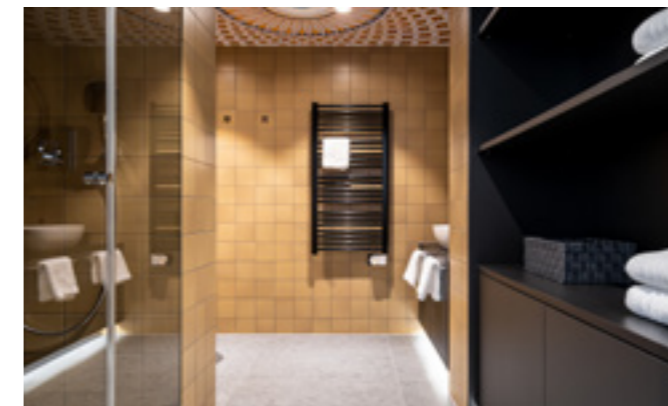
Germany | Pirna

### Architect | Interior Designer

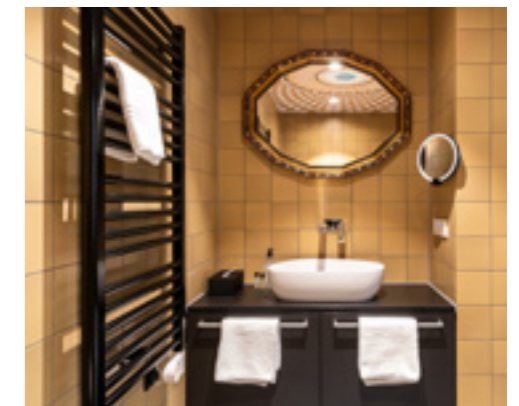
TRU Architects,  
Truscon GmbH Hamburg

### Contractor

GUT Gruppe



Frame, WaterJewels Washbasin, Sento WC Pan, Istanbul Urinal

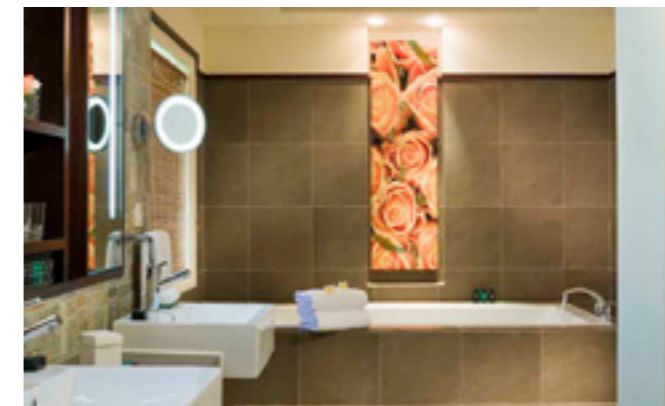


# Sofitel Mauritius L'Imperial Resort and Spa

An enchanting retreat of lush gardens and pristine beaches on the west coast of this tropical paradise, the 5-star Sofitel Mauritius L'Impérial blends the best of France and Mauritius. Superb rooms enjoy tranquil garden or breathtaking ocean views and bathrooms designed to pamper. Five restaurants and two bars, all in stunning settings, tempt the guest with a choice of cocktails and international cuisine; meeting facilities and a lavish spa on site enable mixing business with well-earned pleasure. Local attractions are within easy reach, and the resort is only a one-hour drive from the Sir Seewoosagur Ramgoolam International Airport.

## Location

Mauritius | Flic en Flac



Nuovella Washbasin





## W Hotel XI'AN

With balconies commanding panoramic views of Qu Jiang, and all boasting a signature W bed, the luxury W Xi'an hotel's 385 guestrooms additionally offer access to unforgettable culinary experiences at three dining venues and a wonderful selection of cocktails at the Woobar – after a session at the indoor pool, fitness centre or the relaxing spa, perhaps.

### Location

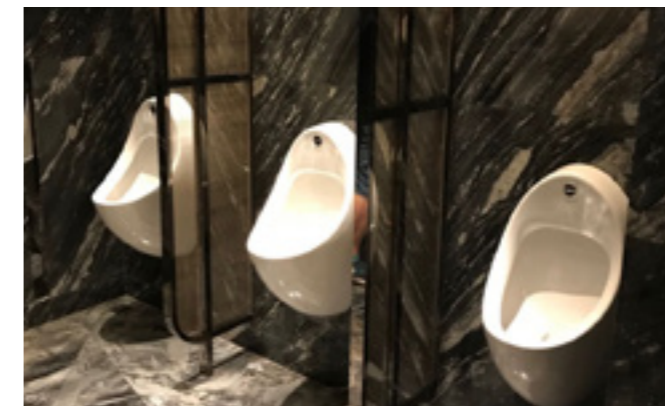
China | XI'AN

### Architect | Interior Designer

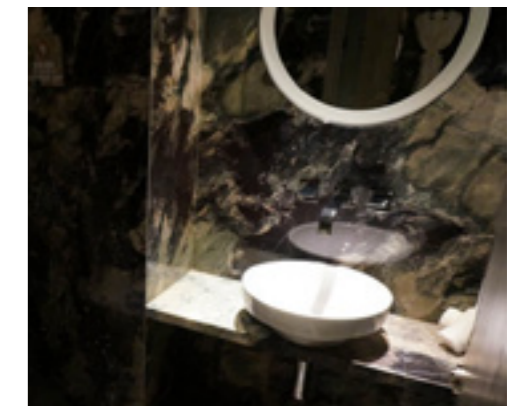
AB Concept

### Developer

Vanzhong Real Estate



Water Jewels Washbasin, Arkitekt Urinals



## Queen Mary II

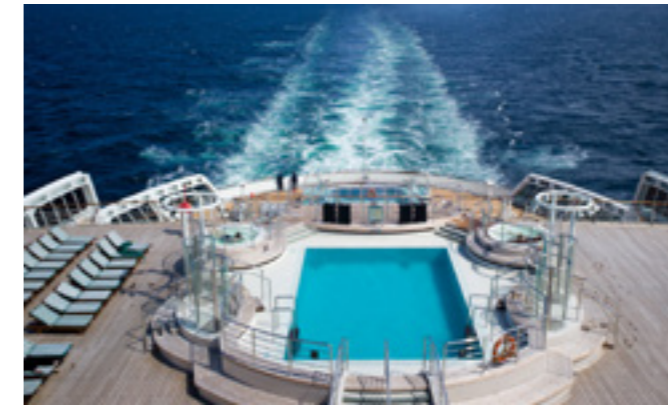
Five swimming pools adorning the deck of Queen Mary 2, the biggest cruiser in the world, have been covered with VitrA porcelains. Queen Mary 2 has five decks, 2600 passenger capacity and it is 345 m in length. Construction of this luxury vessel was completed in December 2003 through efforts of over 3000 workers with a total cost of 800 million Euros. Pool tiles under VitrA Arkitekt products; pool and channel edges, beading, corners, coveskirtings were designed specially for the project by engineers of Queen Mary 2 and Eczacıbaşı VitrA Tiles Project Team. All the porcelain materials and ceramic parts of pools were chosen from the architectural program of VitrA. Vessel building engineers and VitrA engineers cooperated to respond to specific requirements for the construction of Queen Mary 2.

### Location

France - U.K.

### Contractor

Marbresol



Arkitekt Pool Tiles



# Renaissance Mumbai Convention Centre Hotel

Five-star luxury in the business district nestling in 15 acres of verdant gardens and winding walkways on the bank of Lake Powai, the Renaissance Mumbai Convention Centre Hotel has everything: fantastic scenery, access to popular attractions, 600 rooms and suites with marble bathrooms, spa, fitness centre, swimming pool, Italian, Indian, Chinese and international cuisine, 24-hour room service, grocery shopping, and beautifully-designed, flexible function rooms including the largest banqueting hall in Powai. The reception setup at the Renaissance Gardens overlooking the lake is certain to provide unforgettable memories.

## Location

India | Mumbai

## Architect | Interior Designer

P49 Design

## Developer

Chalet Hotels



S50 WC Pan, Metropole Washbasin



## JW Marriott Mumbai Sahar

Located a mere 450 yards from Chhatrapati Shivaji International Airport, Mumbai, the effortlessly elegant JW Marriott Mumbai Sahar's unparalleled luxury and world-class service include pillow top beds and marble bathrooms in the 588 suites and rooms, gourmet dining in a choice of Thai, Japanese, Italian, Chinese, Indian or international cuisine, swimming pool, spa, fitness centre, double-storey executive lounge with individual workstations, generous convention spaces and sprawling ballrooms. A stylish lobby and imaginative use of open spaces and natural light distinguish the architecture.

### Location

India | Mumbai

### Architect | Interior Designer

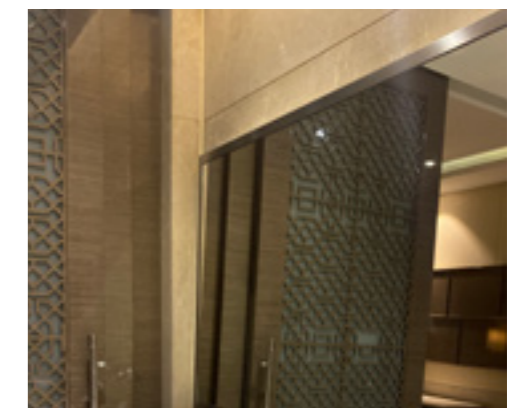
Peter Selling & Associates

### Developer

Chalet Hotels



S50 WC Pan, S20 Washbasin



## Residential

---

The Makers Shoreditch	57
New Garden Quarter and Bow Garden Square	59
Caledonian Road	61
Royal Wharf	63
Address Residences Jumeirah Resort	65
Jumeriah Beach Residence	67
d'Leedon Heights	69



## The Makers Shoreditch

A high specification development, Nile Street provides a quiet retreat between vibrant Shoreditch and the financial district that is the City: five studio flats, 155 two- and three-bedroom apartments and a small number of family duplexes with private roof gardens, and a college on site, all benefiting from communal facilities such as a screening room, two landscaped garden terraces, a gym, a treatment room and three lounges. Security guaranteed by 24/7 concierge services and an uplifting interior design inspired by the 1920s complete the generous features of this secluded urban haven.

### Location

UK | London

### Architect | Interior Designer

Avanti Architects Limited

Grant Associates

### Developer

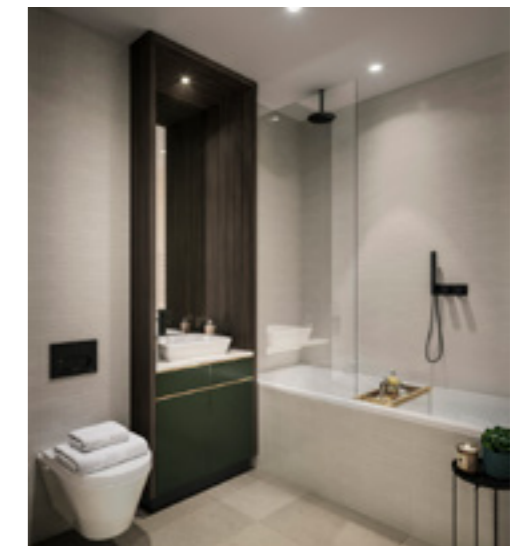
London Newcastle

### Contractor

McLaren Construction Limited



M-Line Washbasin, Nuo Washbasin, S20 WC Pan,  
Matrix WC Pan



# New Garden Quarter and Bow Garden Square

The classic London square reimaged as 471 new homes surrounding a two-acre garden and over 10,000 sq ft of commercial space next to the Queen Elizabeth Olympic Park and Westfield Shopping Centre, the New Garden Quarter enjoys great transport links: the nearby Stratford station served by the Underground, Overground, DLR and National Rail. The award-winning regeneration project that is Bow Garden Square similarly benefits from the Mile End Underground station and Devons Road DLR station. Multi-tenure homes, a primary school/nursery, a sports hall/community centre, a mosque and a playground area create a vibrant community on a 2.4-acre site.

## Location

UK | London

## Architect | Interior Designer

Avanti Architects

## Developer

Telford Homes



Sento Wall-Hung Pan, Nuo Washbasin,  
S50 Washbasin, S50 Wall-Hung WC Pan



## Caledonian Road

A stylish development between popular Islington and the vibrant Kings Cross district, London Square Caledonian Road is a collection of 150 high specification one- and two-bedroom apartments around a landscaped courtyard. A glass-fronted entrance lobby, concierge services, on-site gym and communal podium gardens overlooking the greenery of Market Road Gardens all add to the attraction. International recognition includes the 2017 Planning Award for Best Mixed Use Development and the Evening Standard's Homes & Property 2019 New Homes Award for a selected two-bedroom apartment with a triple aspect open plan living area in the Glasshouse block.

### Location

UK | London

### Architect | Interior Designer

PKS Architects

### Developer

London Square

### Contractor

R P M Building Contractors



M-Line Vanity Washbasin, Sento Wall-Hung WC Pan





## Royal Wharf

A new riverside village in the heart of the Royal Docks £3.5bn regeneration area, Royal Wharf additionally benefits from a generous provision of amenities, connectivity and open green space. A variety of brick townhouses inspired by the traditional Georgian architecture of Belgravia and Fitzrovia, and contemporary apartment buildings command spectacular views over the Thames, O2 and Canary Wharf in this exciting development designed around the resident.

### Location

UK | London

### Architect | Interior Designer

Glenn Howells Architects

Whittam Cox Architects

Mae Architects

Serie Architects

David Morley Architects

### Developer

Ballymore & Oxley



M-Line WC Pan, Nuo Wall-Hung Washbasin



# Address Residences Jumeirah Resort

An iconic twin tower offering an unparalleled beachfront lifestyle on Bluewaters Island: luxury hotels and serviced apartments within walking distance of Dubai's top destinations, retail and leisure facilities, and hassle-free travel to the city centre. World-class amenities include international dining, a spa and a rooftop infinity pool commanding spectacular views of the Arabian Gulf, Dubai Marina and Ain Dubai - the world's tallest observation wheel.

## Location

UAE | Dubai

## Architect | Interior Designer

KCA International

## Developer

Emaar Properties

## Contractor

Emaar Properties



Integra Rim-ex WC Pan, Sento Washbasin,  
Sense 1F Shower Mixer



## Jumeriah Beach Residence

A sophisticated community of 40 towers (35 residential, and five hotels) on the Arabian Gulf, JBR combines the best of city- and beachfront living. Over 6,000 apartments, from studios through to 510-sq m penthouses, enjoy access to top dining, shopping, education, leisure, and healthcare facilities – and all within a stone's throw.

### Location

UAE | Dubai

### Architect | Interior Designer

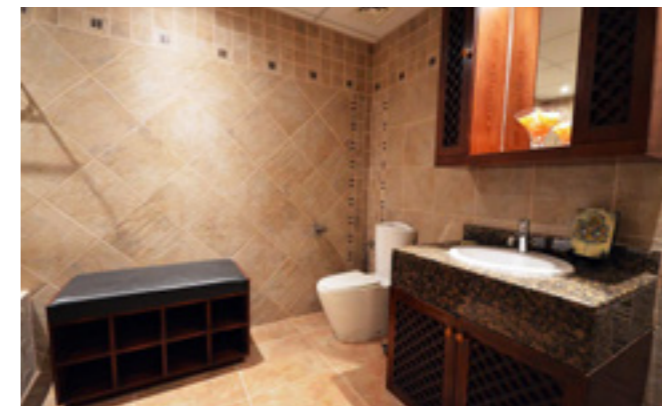
Edge Design

### Developer

Dubai Properties

### Contractor

Dubai Properties



Minimax Basin Mixer



## d'Leedon Heights

A landmark residential complex of seven 36-storey petal-shaped tower blocks, 12 villas and a wealth of facilities including tennis courts, swimming pools, two club houses, gym, spas and shops, D'Leedon additionally benefits from extensive green spaces as 70% of the grounds is landscaped. Designed by the internationally renowned Pritzker Prize winner Zaha Hadid, it has 1,715 residential units and eight retail shops; higher storeys command panoramic views that reach all the way to the Bukit Timah Hill and nature reserves.

### Location

Singapore | Singapore

### Architect | Interior Designer

Zaha Hadid Architects

### Developer

Capitaland Limited  
Hotel Properties Limited

### Contractor

R P M Building Contractors



Istanbul, Style X Mixers, Freedom Wall-Hung WC Pan and Bidet, S50 Washbasin



## Culture and Education

---

Dakar Exposition Centre	73
Princess Nourah bint Abdul Rahman University	75
Heydar Aliyev Cultural Centre	77
Sancaklar Cami	79
Tripoli International Congress Center	81



## Dakar Exposition Centre

An international conference and exhibition centre comprising four sections of partially open and fully enclosed spaces connected by walkways and cooled by an ingenious combination of a belt of water and a latticed sun shelter, the Dakar Exposition Centre has a high-security presidential entrance and a separate main entrance leading to exhibition areas, the congress hall, and other facilities making up this multipurpose complex inspired by the rich local culture.

### Location

Senegal | Dakar

### Architect | Interior Designer

Tabanlıoğlu Architects

### Developer

République du Sénégal,  
Presidence de La République SOGIP SA

### Contractor

Summa International Construction



S20 WC Pan, Conforma Special Needs WC Pan,  
Aquatech Special Needs Mixer

# Princess Nourah bint Abdul Rahman University

The Nourah Bint Abdulrahman University is the largest women's university in the world. Innovative design and technology uphold the complex characteristics of the Saudi culture throughout the campus of academic and administrative buildings, healthcare, sports and recreational facilities and the first women's driving school in the Kingdom. A number of colleges and institutions offer diplomas, bachelor and postgraduate degrees to 60,000-plus students.

## Location

KSA | Riyadh

## Architect | Interior Designer

Perkins + Will,  
Dar Al-Handasah

## Contractor

El-Seif Contracting



## Heydar Aliyev Cultural Centre

Designed by the eminent British-Iraqi architect Zaha Hadid to reflect the optimism of Azeri culture, the fluid form of the 57,500-sq m (619,000 sq ft) complex has become an iconic landmark in modern Baku. Accommodating a 1,000-seat auditorium, exhibition spaces, a conference centre, workshops, and a museum over eight levels, this deliberate move away from the monumentality of the earlier Soviet regime won the Design Museum's Design of the Year Award in 2014.

### Location

Azerbaijan | Baku

### Architect | Interior Designer

Zaha Hadid Architects

### Contractor

DIA Holding



Istanbul sanitary ware products





## Sancaklar Mosque

A tranquil validation of the essence of Islam located in suburban Büyükçekmece, Sancaklar Mosque avoids form-based discourse altogether. Blending into a hillside facing gated communities and surrounded by a neat slate wall, the mosque complex creates a serene space for worship. The interior is equally sleek, subtly illuminated, with daylight streaming in from the Qibla wall. The only embellishment is a single inscription: 'Remember your Lord much.'

### Location

Turkey | İstanbul

### Architect | Interior Designer

Emre Arolat Architecture

### Contractor

DIA Holding



Pure, Juno Mixer



# Tripoli International Congress Center

Tripoli is the largest city, the principal port and the largest commercial and manufacturing center in Libya. The modern building was designed to be in harmony with the local heritage and natural resources and to be used to establish a rapport with the global community. The total construction site is 25,000 m<sup>2</sup>. The center houses numerous meeting rooms and conference halls, restaurant and administrative offices. The building has a semi-transparent perimeter "shield" designed with bronze mesh, an 8 m corridor encircling all 3 sides and the main building is flanked with a 4 m wide reflection pool. The site also has semi-open corridors and glass wall systems allowing for a balance of light and shade in the interiors. The TICC is already the recipient of numerous awards. During the International Property Awards, it received "The Best Public Building" International Architecture Award. At the Cityscape Awards for Architecture held in Dubai, it was awarded top honors in the "Best Public Category" category.

## Location

Tripoli | Libya

## Architect | Interior Designer

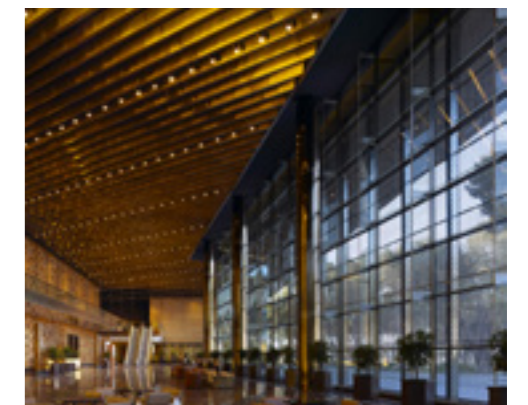
Tabanlıoğlu Architects

## Contractor

System İnşaat



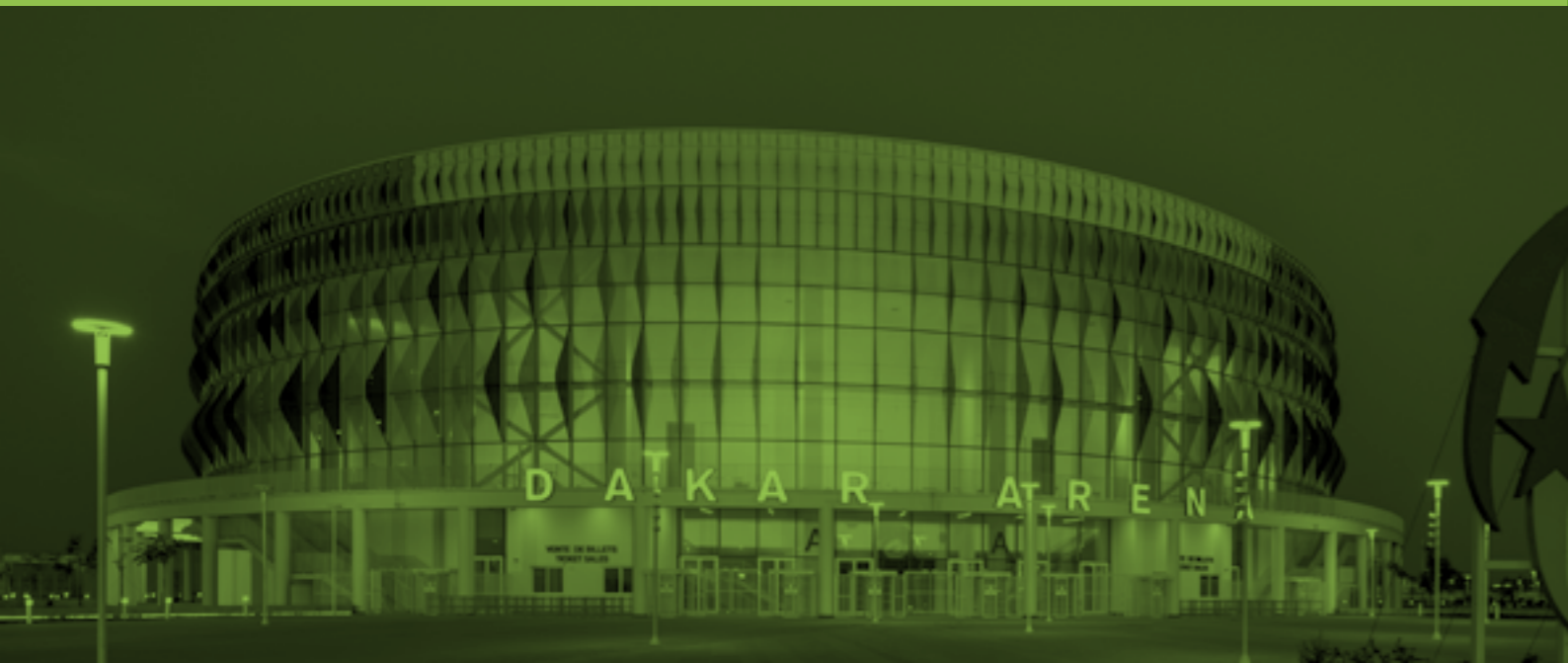
VitrA sanitaryware, brassware products and tiles



## Sports

---

The Dakar Arena	85
Vodafone Park	87
Baku Olympic Stadium	89
Astana Stadium	91



## The Dakar Arena

This multipurpose sports hall with a seating capacity of 15,000 is the home of Senegal's men's and women's national basketball teams. Sunshade 'leaves' in Senegalese colours taper in size as they rise along the exterior, whilst the parabolic seating indoors enables universal access and uninterrupted views from every seat. Dakar Arena is as much an urban plaza as an event space for the locals.

### Location

Senegal | Dakar

### Architect | Interior Designer

Yazgan Design Architecture

### Developer

République du Sénégal,  
Presidence de La République SOGIP SA

### Contractor

Summa International Construction



Sento WC Pan, Pure Basin and Bath Mixer,  
Concealed Cistern, Therapy Shower Head,

## Vodafone Park

An all-seater multi-purpose stadium in the Beşiktaş district and the home ground of the eponymous Beşiktaş JK, Vodafone Park rose on the site of club's former home by the Bosphorus, the listed BJK İnönü Stadium; in homage to the stunning site's history, the façade and the Old Open stands were preserved. With VIP seating, exclusive box seats, rich content digital displays, and a host of high-tech and luxury amenities for a variety of events from sports meets through to concerts and fashion shows, this ultramodern 41,188-spectator venue also hosted the 2019 UEFA Super Cup on 14 August 2019. Attention to the club's history and the natural landscape of the Bosphorus has resulted in a spectacular feat of architecture that 'reflects history, heritage and prosperity.

### Location

Turkey | İstanbul

### Architect | Interior Designer

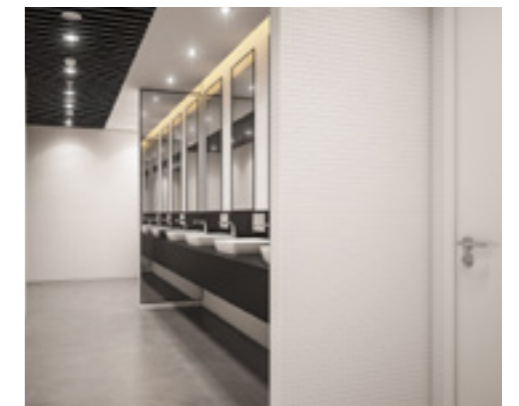
DBArchitects

### Contractor

BJK Beşiktaş Construction



Metropole, S20, Memoria Washbasin, Aquamed, Q-line, Nest Trendy Mixers, Arkitekt Urinals, Metropole, S20 Wall-Hung WC Pan



## Baku Olympic Stadium

A 68,700-seat venue designed and constructed to meet international standards set by UEFA, FIFA and the IAAF, the Baku Olympic Stadium was opened on 6 March 2015. Rising to a height equivalent to a six-storey building, it is located in a complex covering an area of 617,000 sq m and which includes a number of hotels, a 3,617-capacity car park and green spaces of 81,574 sq m.

### Location

Azerbaijan | Baku

### Architect | Interior Designer

Heerim,  
ROSETTI

### Developer

Tekfen Construction

### Contractor

JW Marriott Absheron Baku



Arkitekt WC Pan, Minimax S Mixers,  
S20, S50 Washbasins



## Astana Stadium

The stadium is as a multifunctional entertainment complex for various sports and gathering purposes, but it is mainly intended as a soccer field compliant with FIFA and UEFA criterias. Aligned with the elliptical outer form, the circulation line creates dynamic and functional areas. With a seating capacity of up to 30,000, the two-tiered stadium has 24 entrance and exit gates. Apart from its functional features, the Astana Stadium is an impressive landmark - a symbolic structure that represents the modern and forward-looking aspects of Kazakhstan's new capital.

### Location

Astana, Kazakhstan

### Architect | Interior Designer

Tabanlıoğlu Architects

### Contractor

Sembol Construction



Vitra Aquatech brassware products and Vitra Arkitekt sanitaryware products.



## Airport

---

Airport Sheremetyevo, terminal B	95
Heathrow - Terminals 2, 3 and 5	97
Berlin-Schönefeld Airport	99





## Airport Sheremetyevo, Terminal B

Winner of Russia's ARX 2007 Architecture Award in transportation buildings category, the project involves construction of the third terminal of Sheremetyevo Airport to serve as an international gateway to Moscow.

Used by more than 40 international airlines, as well as Russian airlines and those of other CIS countries, Sheremetyevo Airport currently has two domestic and international passenger terminals: Sheremetyevo-1 and Sheremetyevo-2, respectively, plus related airport facilities. The construction of the new terminal will increase passenger handling capacity without limiting the operations of the existing airport facilities, and create the required reserve capacity for the future reconstruction of Sheremetyevo-1 and Sheremetyevo-2 terminals.

### Location

Russia | Moscow

### Architect | Interior Designer

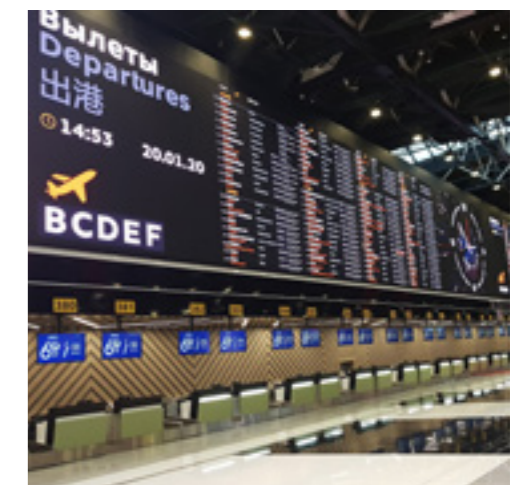
RMJM

### Contractor

ENKA Construction



Metropole Washbasin, Zentrum WC Pan, AquaSee Mixer, Concealed Cistern, Loop T Control Panel



## Heathrow - Terminals 2, 3 and 5

Serving 30 million passengers a year, Heathrow Terminal 5 is the busiest of all BAA's terminals. Terminal 5 is intended to reinforce Heathrow's position as Europe's principal intercontinental hub.

The client, British Airports Authority (BAA) and the major tenant, British Airways, required a new terminal building and satellite on a site covering some 250 hectares - a complex capable of handling up to 36 million passengers a year.

With over 50 WC facilities throughout the terminal, all needing to meet strict design, accessibility and durability criteria, a new approach to the washroom specification was required. T5's accessibility strategy demanded that all washroom facilities should not only meet but surpass the current Part M Regulations and Design Disabilities Act. Unfortunately there was no product in the market place that met the requirements. Not willing to accept the usual approach adopted of "tacking on" an unsightly and unhygienic back box to the rear of a standard WC pan, BAA Design approached VitrA U.K. Ltd. in order to meet the 750 mm projection.

### Location

UK | London

### Architect | Interior Designer

Richard Rogers (RRP)

### Contractor

Mansells



Matrix WC pan and VitrA Customized  
Production Washbasin



## Berlin-Schönefeld Airport

The international Berlin-Schönefeld Airport is currently one of Berlin's three airports. The facility is scheduled to be transformed into Berlin-Brandenburg International Airport in 2011, when the other two airports will close and BBI will remain as the German capital's single airport with an up to 50 million passenger capacity. Founded in 1934, the historic Berlin-Schönefeld is popular with vacationers, and is often referred to as 'The Holiday Airport' due to its international charter flight load.

VitrA Ararat Ivory Porcelain tiles were chosen to cover the check-in areas of the recently renovated Terminal D of Berlin-Schönefeld. A total of 8,000 m<sup>2</sup> gleaming Ararat Ivory cheerfully greets the passengers as they make their way to and from sunny destinations. Manufactured to endure the challenges of high traffic areas, stylish VitrA porcelain tiles remain a favorite of international projects across the globe.

### Location

Berlin | Germany

### Contractor

Flughafen Berlin Schönefeld GmbH



Urban Life Tiles





## Commercial

---



The Sphere at Expo 2017	103
Aldgate Tower	105
Paya Lebar Quarter	107
Kanyon	109



## The Sphere at Expo 2017

The focus of Expo 2017, Nur Alem, the world's largest spherical construction illustrates the theme of the exhibition: Future Energy. The 100-metre-high sphere has a diameter of 80 m and is clad in individually formed photovoltaic glass panels; two noiseless wind turbines add to the power generation capacity. Housing displays on renewable energy and innovative technologies in the enclosed area of 24,000 sq m and offering a bird's eye view of Astana from the top, Nur Alem was converted into the Museum of Future Energy after Expo 2017.

### Location

Kazakhstan | Astana

### Architect | Interior Designer

Adrian Smith + Gordon Gill Architecture

### Developer

Astana EXPO-2017  
National Company JSC

### Contractor

Sembol Construction



Zentrum, Arkitekt, Matrix Sanitary ware products,  
Minimax, Nest Trendy, AquaSee Mixers



# Aldgate Tower

Comprising 16 levels of column-free Grade A office space, a double-height reception area, a viewing terrace and leisure facilities immediately above Aldgate East tube station, the 320,000-sq ft Aldgate Tower is now fully let to high profile businesses such as the Intellectual Property Office of the United Kingdom, Uber, Aecom, WeWork, and Maersk. Two gently curved, folded planes enclose the building, creating a softer visual mass.

**Location**

UK | London

**Architect | Interior Designer**

Wilkinson Eyre Architects

**Developer**

Brookfield Property partners

**Contractor**

ISG



Matrix Wall-Hung WC pan



## Paya Lebar Quarter

Located in the eponymous cultural enclave and business hub, the Paya Lebar Quarter is a 'living fabric' of residential and commercial spaces. The silver-and-gold palette of the façade inspired by Songket, a traditional Malay brocade, unifies buildings and public areas. The PLQ Mall is a rich blend of quality shopping, dining venues and a wealth of conveniences. Three towers at the Park Place Residences offer a total of 429 upmarket apartments in a quiet sanctuary with swimming pools and wellness centres and benefiting from easy access to the vibrant city.

### Location

Singapore | Singapore

### Architect | Interior Designer

DP Architects

### Developer

Lendlease and Abu Dhabi Investment Authority



Nest Wall-Hung WC Pan, Nuo Washbasin  
Nature Basin Mixer



## Kanyon

Kanyon is an innovative, mixed-use real estate project offering a healthy, satisfying and modern lifestyle in the heart of Istanbul. Inaugurated in May 2006 as an equal share joint venture between Eczacıbaşı Pharmaceutical and Industrial Investment and İş Real Estate Investment Trust, Kanyon is today one of Europe's largest multifunctional centers. Several well-known national and international companies were involved in this \$200 million project, including Jerde Partnership International, Tabanlıoğlu Architects, Arup Engineering and Tepe Construction.

### Location

Turkey | İstanbul

### Architect | Interior Designer

Tabanlıoğlu Architects

### Contractor

Tepe Construction



Metropole Wall-Hung WC Pan, Arkitekt Urinal, Memoria Washbasin





## Hospital

---

Gagua Clinic	113
Acibadem Altunizade Hospital	115
Liv Hospital	117



## Gagua Clinic

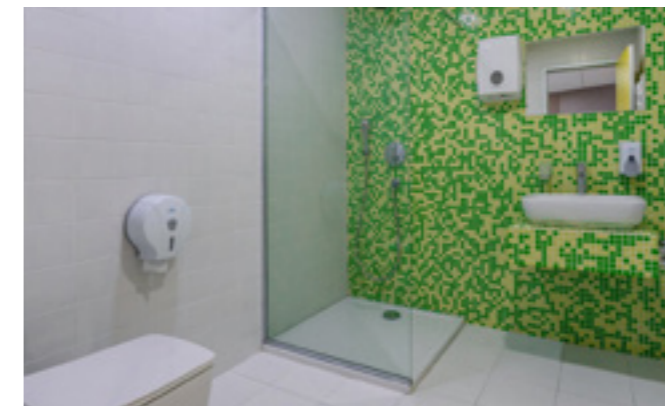
The first private maternity clinic in the country, the Gagua Clinic has been providing high quality medical care since 1997 on six floors. The 100-bed facility has four operation theatres and several intensive therapy halls in a bright, family-friendly environment. Cheerful yellows and greens highlight the neat lines of concrete in this innovative architectural vision, which was recognised with a Special Mention in the 2019 German Design Awards.

### Location

Georgia | Tbilisi

### Architect | Interior Designer

Tsutskiridze + Architects



S50 Wall-Hung WC Pan, Metropole Washbasin



# Acibadem Altunizade Hospital

Its design inspired by the human body's ability for self healing, the Liv Ulus is an ultra-modern JCI- and TÜV-accredited hospital. 154 beds, 50 clinics, and eight operating theatres in 30,000 sq m of enclosed space, Liv is as much an advanced diagnostic and treatment centre as it is an excellent research facility. Personalised '360 degree' service is at the heart of the Liv Group's approach to patient care.

## Location

Turkey | İstanbul

## Architect | Interior Designer

Lina Mimarlık

Metex Design Group

## Developer

Acibadem Healthcare Group



S50 , Zentrum , Metropole, Sento, Arkitekt Sanitary ware, AquaMed Basin Mixer



## Liv Hospital

Inspired by the self-healing ability of the human body, Liv Hospital knows that the greatest treatment has started peacefully since its inception, and continues to advance with a focus on individualized treatment. You can reach our specialist 24/7 in any language and completely free. Capital letters of the principle, Leading International Vision was inspired when naming the hospital; therefore, the word "life" is the most significant symbol of existence. Liv Hospital based on miraculous capability of the human body for architectural approach as well as the services.

### Location

Turkey | İstanbul

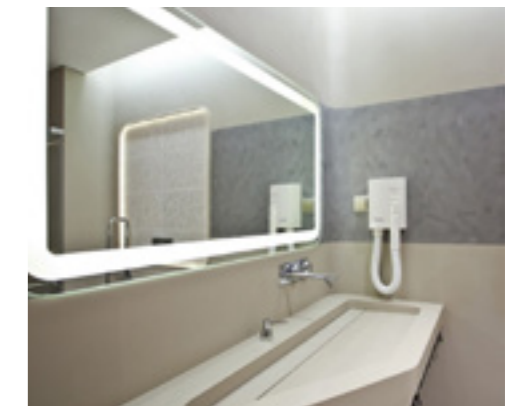
### Architect | Interior Designer

Tümay Design

Zoom TPU

### Contractor

Form Group



X-Line, İstanbul, Minimax S, T4, Q-Line Mixers,  
İstanbul Accesories, S20, S50, Arkitekt Sanitary ware

## Head Offices and Plants

---

### Eczacıbaşı Building Products Co.

Büyükdere Cad. Ali Kaya Sok.  
No: 5 Levent 34394  
İstanbul, Turkey  
**Phone:** +(90 212) 350 80 00  
**Fax:** +(90 212) 350 85 58

**Ceramic Sanitaryware Plant**  
4 Eylül Mah. İsmet İnönü Cad.  
No:271 Bozüyük 11300  
Bilecik, Turkey  
**Phone:** +(90 228) 314 04 00  
**Fax:** +(90 228) 314 04 12

**VitrA Sanitaryware LCC (Plant)**  
Pchelintsev Poselok Bolshevik,  
Bld. 2 Serpukhovsky Region  
Moscow Region 142253 Russia  
**Phone/Fax:** +7 (4967) 380672

### Taps and Mixers Plant

İsmet İnönü Cad.  
Düzdağ Yolu No:4  
Bozüyük 11300 Bilecik, Turkey  
**Phone:** +(90 228) 314 07 90  
**Fax:** +(90 228) 314 07 96

### Bathroom Furniture Plant

E5 Karayolu üzeri, Şifa Mah. Aslı  
Sok. Tuzla 34950  
İstanbul, Turkey  
**Phone:** +(90 216) 581 20 00  
**Fax:** +(90 216) 581 20 90

### Showering Area Plant

E5 Karayolu üzeri, Şifa Mah. Aslı  
Sok. Tuzla 34950  
İstanbul, Turkey  
**Phone:** +(90 216) 581 20 00  
**Fax:** +(90 216) 581 20 90

### VitrA Tiles Co.

E5 Karayolu Üzeri Şifa Mah.  
Hükümet Cad.  
No:5 Tuzla 34941 İstanbul, Turkey  
**Phone:** +(90 216) 581 46 00  
**Fax:** +(90 216) 423 49 73

### Ceramic Tile Plant

Eskişehir Karayolu üzeri 4. km  
Bozüyük 11300 Bilecik, Turkey  
**Phone:** +(90 228) 314 04 22  
**Fax:** +(90 228) 314 04 28

### VitrA Tiles LCC (Plant)

Poselok Bolshevik, Bldg. 1  
Serpukhovsky Region  
Moscow Region 142253 Russia  
**Phone/Fax:** +7 (7495) 640 44 14

## Sales Organisations

---

### VitrA Turkey

Büyükdere Cad. Ali Kaya Sok.  
No: 5 Levent 34394  
İstanbul, Turkey  
**Phone:** +(90 212) 350 80 00  
**Fax:** +(90 212) 350 84 45  
**www.vitra.com.tr**

### VitrA Germany

Agrippinawerft 24,  
50678 Cologne, Germany  
**Phone:** +49 (0) 221 / 27 73 68-0  
**Fax:** +49 (0) 221 / 27 73 68-500  
**www.vitra-bad.de**

### VitrA Italy

Viale San Pietro 83  
41049 Sassuolo (Mo) - Italy  
**Phone:** +39 0536 1818100  
**www.vitraglobal.com**

### VitrA France

Z.I. Le Poirier - CS 80019  
F - 28132 Nogent Le Roi  
CEDEX France  
**Phone :** +33 (0)2 37 38 69 92  
**www.vitra-bad.fr**

### VitrA International

Büyükdere Cad. Ali Kaya Sok.  
No: 5 Levent 34394  
İstanbul, Turkey  
**Phone:** +(90 212) 350 80 00  
**Fax:** +(90 212) 350 84 45  
**www.vitraglobal.com**  
**export@vitra.com.tr**

### VitrA UK

Park 34 Collet Way,  
Didcot Oxon OX11 7WB, UK  
**Phone:** +(44 1235) 750 990  
**Fax:** +(44 1235) 750 985  
**www.vitra.co.uk**

### VitrA USA

211 S. State College Blvd.#348  
Anaheim CA 92806  
**www.vitraglobal.com**

### VitrA Russia

9, Varshavskoe Highway, Bldg.1  
Danilovskaya Manufactory  
Block 'Sitsevy', 4 Entr., 1st Floor  
Moscow 117105 Russia  
**Phone/Fax:** +7 (495) 221 76 11  
**www.vitra-russia.ru**

### VitrA UAE

Jumeirah Business Centre 5  
Unit 1006 No. W1 Jumeirah  
Lake Towers Dubai, UAE  
**Phone:** +(971) 52-276-7386  
**Fax:** +(971) 4-457 2467  
**www.vitraglobal.com**

### VitrA India

Vikas Center, First Floor, #106  
S.V. Road, Santra Cruz (West)  
Mumbai 400054 India  
**Phone:** +(91) 22-6708 5000  
**www.vitra-india.com**

# INDEX

## HOSPITALITY

**Radisson Blu Hotel, 13**  
Architect | Interior Designer  
Avci Architects  
**Contractor**  
Summa International Construction  
**Hyatt Place Taghazout Bay, 15**  
Architect | Interior Designer  
Omar Alaoui + Imaad Rahmouni  
**Contractor**  
Madaef Groupe  
**Kigali Convention Centre, 17 and Hotel**  
Architect | Interior Designer  
Yazgan Design Architecture  
**Developer**  
Ultimate Concept  
**Contractor**  
Summa International Construction  
**Argos Hotel Cappadocia, 19**  
Architect | Interior Designer  
Atelier Argos  
**Contractor**  
Argos Yapı  
**Bebek Hotel, 21**  
Architect | Interior Designer  
Mahmut Anlar  
GEO\_ID  
**Museum Hotel Antakya, 23**  
Architect | Interior Designer  
Emre Arolat Architecture  
**Contractor**  
ASF Otelcilik  
**Amano Home Hotel, 25**  
Architect | Interior Designer  
Jan Wiese Architekten BerlinGEO\_ID  
**Hotel-Restaurant Schwanen, 27**  
Architect | Interior Designer  
Plan2Plus Design Munich  
**Capri by Fraser, 29**  
Architect | Interior Designer  
JOI Design Hamburg  
**Flores Spa Hotel, 31**  
Architect | Interior Designer  
Raimundas Pilkauskas  
**Park Inn by Radisson, 33**  
Architect | Interior Designer  
NRJA  
**Contractor**  
A/S LNK Industries

**Kalev Spa Hotel & Waterpark, 35**  
Architect | Interior Designer  
Emil Urbel  
**Rixos Premium Saadiyat Island, 37**  
Architect | Interior Designer  
Arketipo Design,  
Wimberly Allison Tong & Goo  
**Developer**  
Rixos  
**Contractor**  
Rixos  
**Maxx Royal Belek Golf Resort, 39**  
Architect | Interior Designer  
Geo\_ID  
**Contractor**  
Ersoy Turizm  
**Voyage Belek Golf & Spa, 41**  
Architect | Interior Designer  
Geo\_ID  
Baraka  
**Contractor**  
Ersoy Turizm  
**Designhotel Laurichhof, 43**  
Architect | Interior Designer  
TRU Architects,  
Truscon GmbH Hamburg  
**Contractor**  
GUT Gruppe  
**Sofitel Mauritius L'Imperial Resort and Spa, 45**  
**W Hotel XI'AN, 47**  
Architect | Interior Designer  
AB Concept  
**Developer**  
Vanzhong Real Estate  
**Queen Mary II, 49**  
**Contractor**  
Marbresol  
**Renaissance Mumbai Convention Centre Hotel, 51**  
Architect | Interior Designer  
P49 Design  
**Developer**  
Chalet Hotels  
**JW Marriott Mumbai Sahar, 53**  
**Peter Selling & Associates**  
**Developer**  
Chalet Hotels

## RESIDENTAL

**The Makers Shoreditch, 57**  
Architect | Interior Designer  
Avanti Architects Limited  
Grant Associates  
**Developer**  
London Newcastle  
**Contractor**  
McLaren Construction Limited  
**The Makers Shoreditch, 59**  
Architect | Interior Designer  
Avanti Architects  
**Developer**  
Telford Homes  
**Caledonian Road, 61**  
Architect | Interior Designer  
PKS Architects  
**Developer**  
London Square  
**Contractor**  
R P M Building Contractors  
**Royal Wharf, 63**  
Architect | Interior Designer  
Glenn Howells Architects  
Whittam Cox Architects  
Mae Architects  
Serie Architects  
David Morley Architects  
**Developer**  
Ballymore & Oxley  
**Address Residences**  
**Jumeirah Resort, 65**  
Architect | Interior Designer  
KCA International  
**Developer**  
Emaar Properties  
**Contractor**  
Emaar Properties  
**Jumeriah Beach Residence, 67**  
Architect | Interior Designer  
Edge Design  
**Developer**  
Dubai Properties  
**Contractor**  
Dubai Properties

**d'Leedon Heights, 69**  
Architect | Interior Designer  
Zaha Hadid Architects  
**Developer**  
Capitaland Limited  
Hotel Properties Limited  
**Contractor**  
R P M Building Contractors

## CULTURE AND EDUCATION

**Dakar Exposition Centre, 73**  
Architect | Interior Designer  
Tabanlıoğlu Architects  
**Developer**  
République du Sénégal, Présidence de La République SOGIP SA  
**Contractor**  
Summa International Construction  
**Dakar Exposition Centre, 75**  
Architect | Interior Designer  
Perkins + Will,  
Dar Al-Handasah  
**Contractor**  
El-Seif Contracting  
**Heydar Aliyev Cultural Centre, 77**  
Architect | Interior Designer  
Zaha Hadid Architects  
**Contractor**  
DIA Holding  
**Sancaklar Mosque, 79**  
Architect | Interior Designer  
Emre Arolat Architecture  
**Contractor**  
DIA Holding  
**Tripoli International Congress Center, 81**  
Architect | Interior Designer  
Tabanlıoğlu Architects  
**Contractor**  
System İnşaat

## SPORTS

**The Dakar Arena, 85**  
Architect | Interior Designer  
Yazgan Design Architecture  
**Developer**  
République du Sénégal, Présidence de La République SOGIP SA  
**Contractor**  
Summa International Construction  
**Vodafone Park, 87**  
Architect | Interior Designer  
DBArchitects  
**Contractor**  
BJK Beşiktaş Construction  
**Baku Olympic Stadium, 89**  
Architect | Interior Designer  
Heerim,  
ROSETTI  
**Contractor**  
JW Mariott Absheron Baku  
**Astana Stadium, 91**  
Architect | Interior Designer  
Tabanlıoğlu Architects  
**Contractor**  
Sembol Construction

## AIRPORT

**Airport Sheremetyevo, Terminal B, 95**  
Architect | Interior Designer  
RMJM  
**Contractor**  
ENKA Construction  
**Heathrow - Terminals 2, 3 and 5, 97**  
Architect | Interior Designer  
Richard Rogers (RRP)  
**Contractor**  
Mansells  
**Berlin-Schönefeld Airport, 99**  
**Contractor**  
Flughafen Berlin Schönefeld GmbH

## COMMERCIAL

**The Sphere at Expo 2017, 103**  
Architect | Interior Designer  
Adrian Smith + Gordon Gill Architecture  
**Developer**  
Astana EXPO-2017  
National Company JSC  
**Contractor**  
Sembol Construction  
**Aldgate Tower, 105**  
Architect | Interior Designer  
Wilkinson Eyre Architects  
**Developer**  
Brookfield Property partners  
**Contractor**  
ISG  
**Paya Lebar Quarter, 107**  
Architect | Interior Designer  
DP Architects  
**Developer**  
Lendlease and Abu Dhabi Investment Authority  
**Kanyon, 109**  
Architect | Interior Designer  
Tabanlıoğlu Architects  
**Contractor**  
Tepe Construction

## HOSPITAL

**Gagua Clinic, 113**  
Architect | Interior Designer  
Tsutskiridze + Architects  
**Acibadem Altunizade Hospital, 115**  
Architect | Interior Designer  
Lina Mimarlık  
Metex Design Group  
**Developer**  
Acibadem Healthcare Group  
**Liv Hospital, 117**  
Architect | Interior Designer  
Tümay Design  
Zoom TPU  
**Contractor**  
Form Group

VitrA



VitrA

